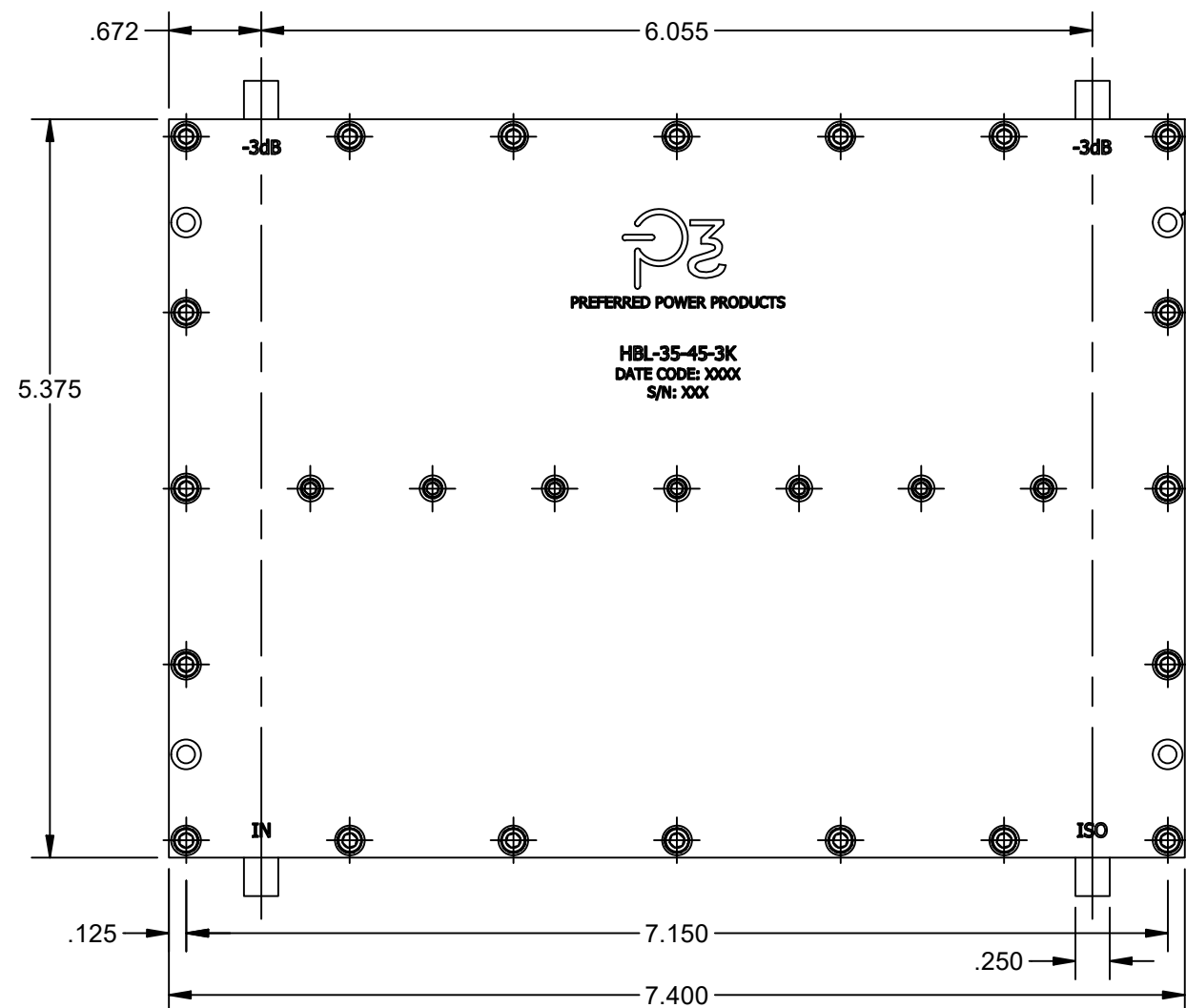
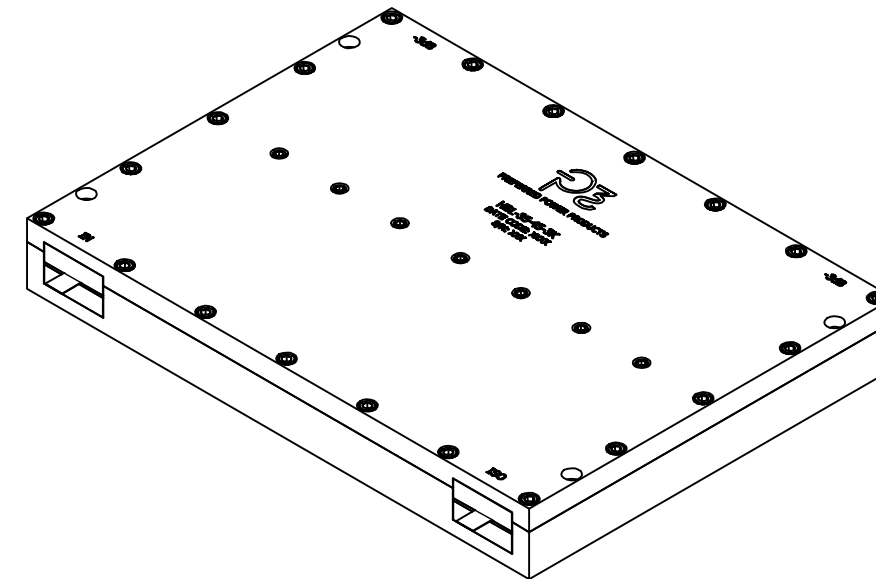
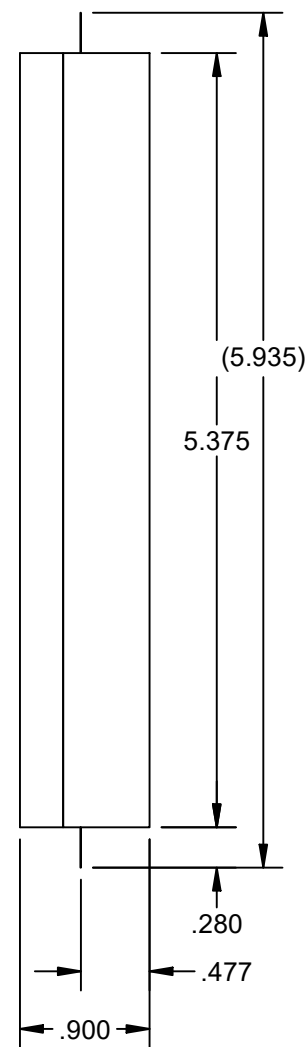


REV	RELEASE	DESCRIPTION	APPROVED	DATE
A	NEW	INITIAL RELEASE	JK	12/7/2021



24X Ø.129 THRU  
 □ Ø.219 ▽ .134  
 MOUNTING HOLES




**ELECTRICAL SPECIFICATIONS:**

FREQUENCY: 35 - 45 MHz  
 POWER: 3000 WATT CW  
 INSERTION LOSS: 0.25 dB  
 AMPLITUDE BALANCE: ±0.5 dB  
 PHASE BALANCE: ±2°  
 VSWR: 1.329:1 MAX  
 ISOLATION: 17 dB  
 OPERATING TEMP: -55°C TO +85°C  
 ENVIRONMENT: SEALED FOR HIGH HUMIDITY APPLICATIONS

**MECHANICAL SPECIFICATIONS:**

MARKING: PER MIL-STD-130  
 FINISH: CHEM-CONVERSION PER MIL-DTL-55413  
 SOLDER TABS: 99.99% PURE SILVER, 0.250" WIDE X 0.005" THICK

 <b>PREFERRED POWER PRODUCTS</b> STUART, FLORIDA 34997	UNLESS OTHERWISE SPECIFIED ALL DIMENSIONS ARE IN INCHES  <u>TOLERANCES:</u> <table border="0"> <tr> <td><u>DECIMALS</u></td> <td><u>ANGULAR</u></td> </tr> <tr> <td>.X ± .1</td> <td>± .5°</td> </tr> <tr> <td>.XX ± .01</td> <td></td> </tr> <tr> <td>.XXX ± .005</td> <td></td> </tr> </table>	<u>DECIMALS</u>	<u>ANGULAR</u>	.X ± .1	± .5°	.XX ± .01		.XXX ± .005		PART NO <b>HBL-35-45-3K</b> HYBRID COUPLER 35 - 45 MHz 3000 WATT CW	
	<u>DECIMALS</u>	<u>ANGULAR</u>									
.X ± .1	± .5°										
.XX ± .01											
.XXX ± .005											
THIS DRAWING AND ALL CONTENTS HEREIN, ARE THE SOLE, PROPRIETARY PROPERTY OF PREFERRED POWER PRODUCTS, LLC AND MAY NOT BE USED, REPRODUCED OR DISCLOSED WITHOUT EXPRESSED WRITTEN CONSENT.	CHECKED PD 12/7/2021 DRAWN JK 12/6/2021 CAGE CODE 7W5T7	APPROVED PD 12/7/2021 ENGINEER PD 12/7/2021 SCALE 3:4	SHEET 1 OF 1								

P/N: HBL-35-45-3K  
 Hybrid Coupler, 35-45 MHz  
 Date Code: 2223  
 S/N: 001

6/6/2022 4:54:58 PM

