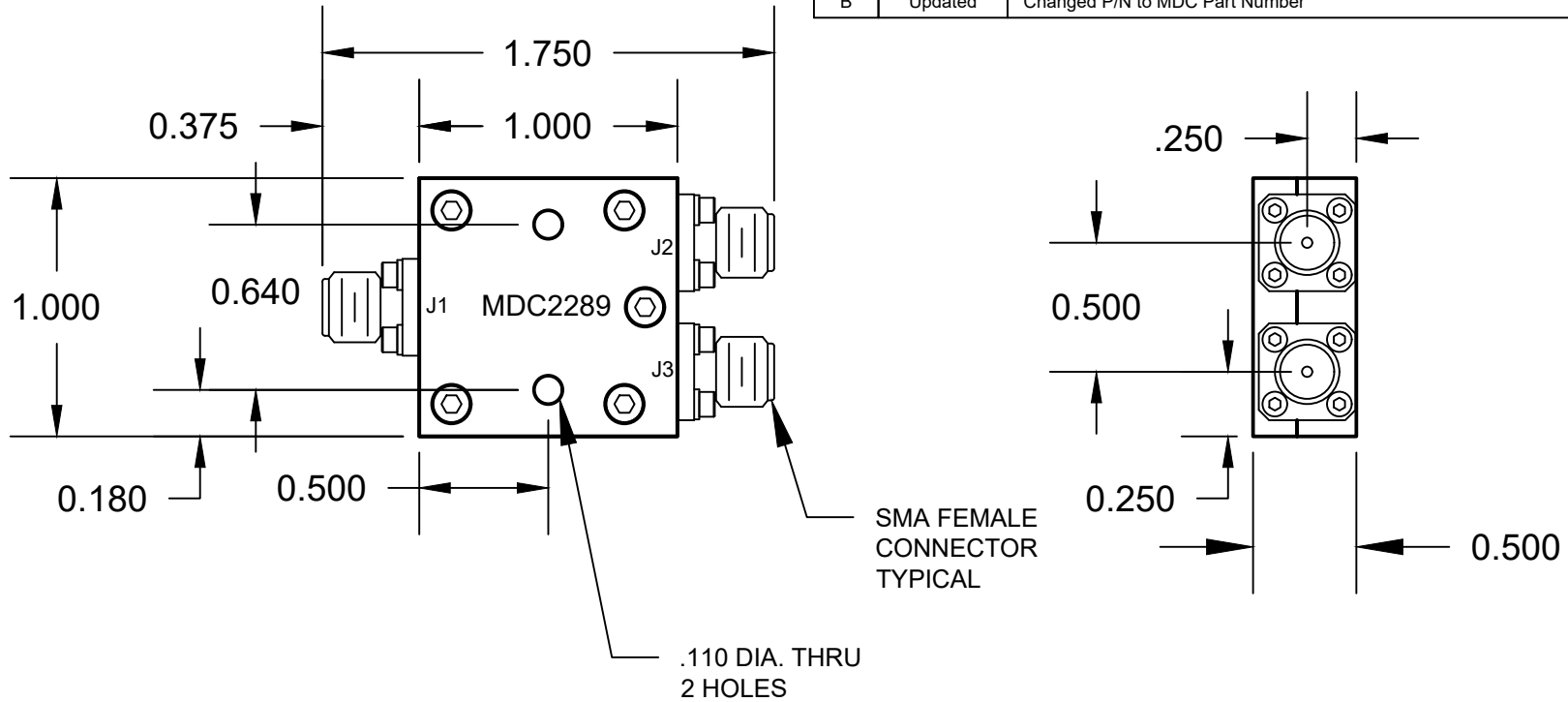



| REV | RELEASE | DESCRIPTION | APPR | DATE |
|-----|---------|--------------------------------|------|----------|
| A | NEW | INITIAL RELEASE | PD | 2/5/2016 |
| B | Updated | Changed P/N to MDC Part Number | PD | 6/1/16 |



SPECIFICATIONS:

FREQUENCY: 8 - 8 GHz.
POWER: 30 WATTS
ISOLATION: 20 dB TYP.
INSERTION LOSS: 0.6 dB MAX.
VSWR: 1.5:1 MAX.
PHASE BALANCE: 5.0 DEG. MAX.
AMPLITUDE BALANCE: 0.2 dB
FINISH: GRAY PAINT



| | | | |
|--|--|--|--|
|  PREFERRED POWER PRODUCTS PALM CITY, FLORIDA 34990 | UNLESS OTHERWISE SPECIFIED ALL DIMENSIONS ARE IN INCHES <u>TOLERANCES:</u> DECIMALS ANGULAR .X ± .1 ± .5° .XX ± .01 .XXX ± .005 | PART NO. MDC2289 POWER DIVIDER, 2-WAY 8-18 GHz. 30 WATT | |
| | THIS DRAWING AND ALL CONTENTS HEREIN, ARE THE SOLE, PROPRIETARY PROPERTY OF PREFERRED POWER PRODUCTS, LLC AND MAY NOT BE USED, REPRODUCED OR DISCLOSED WITHOUT EXPRESSED WRITTEN CONSENT. | CHECKED PD 2/5/2016 APPROVED PD 2/5/2016 DRAWN PD 2/5/2016 ENGINEER PD 2/5/2016 CAGE CODE 7W5T7 SCALE 2:1 SHEET 1 OF 1 | |