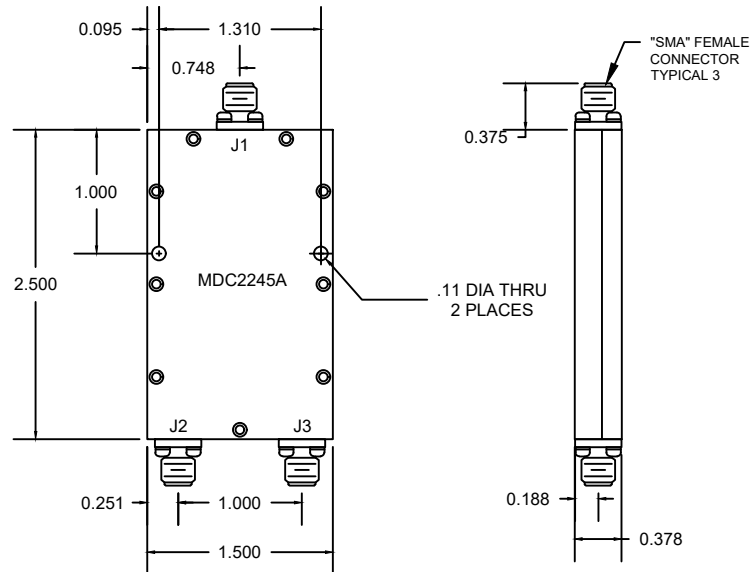



REV	RELEASE	DESCRIPTION	APPR	DATE
A	NEW	INITIAL RELEASE	PD	6/7/16



ELECTRICAL SPECIFICATIONS

Frequency:	500-4000 MHz
Amplitude Balance:	0.2dB
Phase Balance:	±4 Degrees
Power:	30 Watts
Isolation:	20dB TYP.
VSWR:	1.35:1
Insertion Loss:	0.5dB

(REFERENCE P/N: MDC2245A)

 <p>PREFERRED POWER PRODUCTS BOCA RATON, FLORIDA 33434</p>	<p>UNLESS OTHERWISE SPECIFIED ALL DIMENSIONS ARE IN INCHES</p> <p><u>TOLERANCES:</u></p> <table> <tr> <td><u>DECIMALS</u></td> <td><u>ANGULAR</u></td> </tr> <tr> <td>.X ± .1</td> <td>± .5°</td> </tr> <tr> <td>.XX ± .01</td> <td></td> </tr> <tr> <td>.XXX ± .005</td> <td></td> </tr> </table>	<u>DECIMALS</u>	<u>ANGULAR</u>	.X ± .1	± .5°	.XX ± .01		.XXX ± .005		<p>PART NO. PNW2-500-4000-S30</p>	
		<u>DECIMALS</u>	<u>ANGULAR</u>								
.X ± .1	± .5°										
.XX ± .01											
.XXX ± .005											
<p>THIS DRAWING AND ALL CONTENTS HEREIN ARE THE SOLE PROPRIETARY PROPERTY OF MICROWAVE DISTRIBUTORS AND MAY NOT BE USED, REPRODUCED OR DISCLOSED WITHOUT EXPRESSED WRITTEN CONSENT.</p>		<p>POWER DIVIDER/COMBINER, 2-WAY 500 - 4000 MHz. 30 WATT</p>									
<p>CHECKED PD 6/7/16</p>		<p>APPROVED PD 6/7/16</p>									
<p>DRAWN PD 6/7/16</p>		<p>ENGINEER PD 6/7/16</p>									
<p>CAGE CODE 52335</p>		<p>SCALE 1:1</p>	<p>SHEET 1 OF 1</p>								